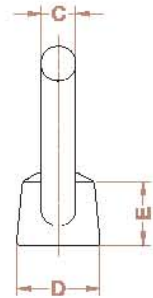
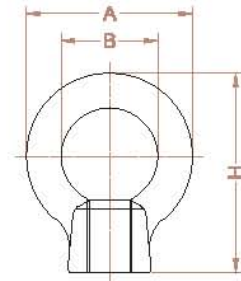


EYE NUT METRIC SIZE



SPECIFICATION

Product Code	Size (mm)	SWL (WLL) (kg)	Dimension(mm)						Weight (kg)
			A	B	C	D	H	L	
ENMM-001	6	40	32.6	20	6.3	16	12	39.3	0.04
ENMM-002	8	80	32.6	20	6.3	16	12	39.3	0.04
ENMM-003	10	150	41	25	8	20	15	48.5	0.06
ENMM-004	12	220	50	30	10	25	19	61	0.1
ENMM-005	14	330	60	35	12.5	30	23	72	0.2
ENMM-006	16	450	60	35	12.5	30	23	72	0.2
ENMM-007	18	550	72	40	16	35	28	86	0.4
ENMM-008	20	630	72	40	16	35	28	86	0.4
ENMM-009	22	790	82	46	18	40	33	100	0.6
ENMM-010	24	950	90	50	20	45	38	111	0.8
ENMM-011	30	1,500	110	60	25	60	46	135	1.6
ENMM-012	36	2,300	133	70	31.5	70	55	161.5	3
ENMM-013	42	3,400	151	80	35.5	80	64	184.5	4.4
ENMM-014	48	4,500	170	90	40	90	73	208	6.1

- **Material**_ Forged carbon steel
- **Test Load**_ Proof Load = SWL(WLL)×3, Breaking Load = Reference of KS B 1034
- **Surface**_ Self Color / Electro Plated
- **Reference**_ KS B 1034
- **ETC**_ Available certificate of NDT (M/T, U/T), 3rd Inspection test report.