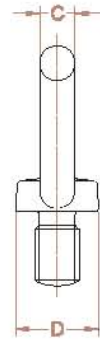
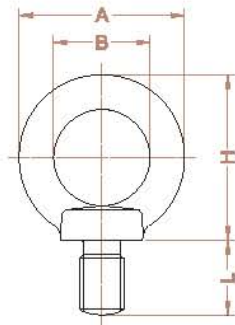


EYE BOLT METRIC SIZE



SPECIFICATION

Product Code	Size (mm)	SWL (WLL) (kg)	Dimension(mm)						Weight (kg)
			A	B	C	D	H	L	
EBMM-001	6	40	32.6	20	6.3	16	33	15	0.03
EBMM-002	8	80	32.6	20	6.3	16	33	15	0.03
EBMM-003	10	150	41	25	8	20	42	18	0.07
EBMM-004	12	220	48	29	9.5	24	50	22	0.12
EBMM-005	14	330	55	32	11.5	28	55	25	0.17
EBMM-006	16	450	60	35	12.5	30	60	27	0.2
EBMM-007	18	550	66	37	14.5	33	66	30	0.3
EBMM-008	20	630	72	40	16	35	71	30	0.4
EBMM-009	22	790	80	44	18	40	80	35	0.6
EBMM-010	24	950	90	50	20	45	90	38	0.8
EBMM-011	30	1,500	110	60	25	60	110	45	1.6
EBMM-012	36	2,300	133	70	31.5	70	131.5	55	2.8
EBMM-013	42	3,400	151	80	35.5	80	150.5	65	4.3
EBMM-014	48	4,500	170	90	40	90	170	70	5.9
EBMM-015	56	6,500	210	110	50	110	210	90	11.1
EBMM-016	64	9,000	210	110	50	110	210	90	11.7
EBMM-017	80	15,000	266	140	63	130	263	105	23
EBMM-018	100	20,000	360	190	85	180	350	130	55
EBMM-019	120	30,000	360	190	85	180	350	145	60

- **Material**_ Forged carbon steel
- **Test Load**_ Proof Load = SWL(WLL)×3, Breaking Load = Reference of KS B 1033
- **Surface**_ Self Color / Electro Plated
- **Reference**_ KS B 1033
- **ETC**_ Available certificate of NDT (M/T, U/T), 3rd Inspection test report.
Special size, design and, another material will can supply as your requirement.