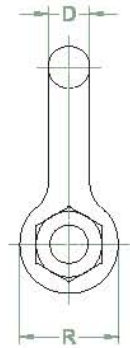
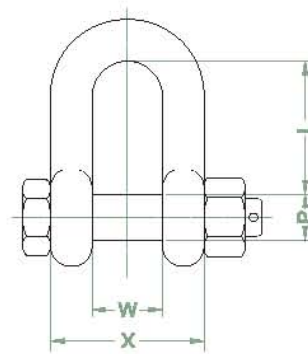


SHACKLE (S.B)



SPECIFICATION

| Product Code | Size (inch) | SWL (WLL) (ton) | Dimension (mm) | | | | | | Weight (kg) |
|--------------|-------------|-----------------|----------------|-----|----|-----|----|-----|-------------|
| | | | B | L | P | R | W | X | |
| SHSB-001 | 1/2 | 2 | 13 | 42 | 16 | 30 | 21 | 47 | 0.4 |
| SHSB-002 | 5/8 | 3.25 | 16 | 51 | 19 | 40 | 27 | 59 | 0.6 |
| SHSB-003 | 3/4 | 4.75 | 19 | 60 | 22 | 48 | 32 | 70 | 1 |
| SHSB-004 | 7/8 | 6.5 | 22 | 71 | 25 | 54 | 37 | 81 | 1.7 |
| SHSB-005 | 1 | 8.5 | 25 | 82 | 28 | 60 | 43 | 94 | 2.3 |
| SHSB-006 | 1-1/8 | 9.5 | 28 | 92 | 32 | 67 | 46 | 103 | 3.4 |
| SHSB-007 | 1-1/4 | 12 | 32 | 99 | 35 | 76 | 51 | 115 | 4.5 |
| SHSB-008 | 1-1/2 | 17 | 38 | 121 | 42 | 92 | 60 | 136 | 7.8 |
| SHSB-009 | 1-3/4 | 25 | 45 | 146 | 50 | 109 | 73 | 163 | 13.7 |
| SHBB-010 | 2 | 35 | 51 | 162 | 58 | 127 | 83 | 185 | 20 |

Standard

- **Material**_ Forged carbon steel(Body), Forged alloy steel(Pin)
- **Test Load**_ Proof Load = SWL(WLL)×2, Breaking Load = SWL(WLL)×6
- **Surface**_ Body(Hot Dip Galvanized), Pin(Painted, Orange Color)
- **Reference**_ Federal specification, RR-C-271D
- **ETC**_ Available certificate of NDT (M/T, U/T), 3rd Inspection test report

Commercial

- **Material**_ Forged carbon steel
- **Test Load**_ Proof Load = SWL(WLL)×1.5, Breaking Load = SWL(WLL)×3
- **Surface**_ Electro galvanized
- **ETC**_ Available certificate of NDT (M/T, U/T), 3rd Inspection test report