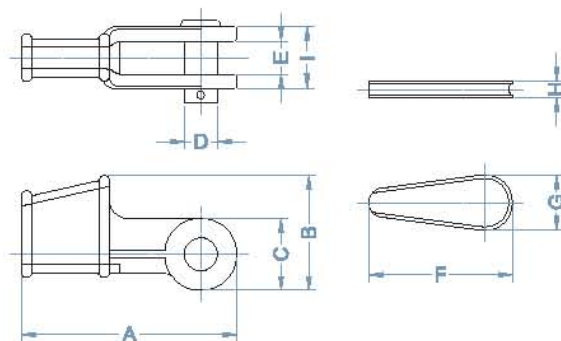


WEDGE SOCKET



SPECIFICATION

Product Code	Size (inch)	SWL (WLL) (ton)	Dimension(mm)									Weight (kg)
			A	B	C	D	E	F	G	H	I	
SKWG-001	3/8	1.5	150	81	46	20.5	21	75	36	12	43	1.5
SKWG-002	1/2	2.5	177	107	56	25.5	28	110	48	15	54	2.4
SKWG-003	5/8	3.5	215	128	66	30	34	136	59	20	64	4
SKWG-004	3/4	5	259	149	75	35	41	115	60	20	76	7.7
SKWG-005	7/8	7	298	166	90	41.5	44	172	65	22	84	10.4
SKWG-006	1	8.5	325	181	110	50.5	51	182	83	26	97	13.1
SKWG-007	1-1/8	10.5	370	205	112	57	56	200	90	30	110	19.9
SKWG-008	1-1/4	12.5	410	225	126	63.5	65	220	97	33	125	28
SKWG-009	1-3/8	14	480	264	156	63.5	70	250	114	40	130	41.7
SKWG-010	1-1/2	18	553	285	165	70	75	294	128	44	135	49.5
SKWG-011	1-5/8	21	618	311	176	76	76	310	124	45	142	68.9

- **Material**_ Cast Carbon steel
- **Test Load**_ Proof Load = SWL(WLL)×2, Breaking Load = SWL(WLL)×5
- **Surface**_ Body & Wedge : Painting(Red), Pin : Electro galvanized
- **Reference**_ Federal specification, RR-S-550D
- **ETC**_ The wedge socket should be applicate 6-8 Strand wire rope of designated size.
Hot dip galvanized / Electric plated available.
Available certificate of NDT (M/T, U/T), 3rd Inspection test report.
Special size, design and, another material will can supply as your requirement.
Don't use wire rope size through "NO-GO" hole
Must use same size wire rope when application of wire rope clip on dead eye.